

# TWM - TIRE WARRANTY INSTRUCTIONS

**STEP 1.** MAKE SURE YOU MARK ROAD HAZARD AREA WITH WHITE OR YELLOW CHALK. IF TIRE HAS A DIFFERENT TYPE OF DEFECT FOR EXAMPLE, "OUT OF ROUND" OR "BOUBLE" PLEASE PROVIDE PROOF IN PICTURE AND VIDEO.

FOR ROAD HAZARD WE ONLY COVER THE FIRST 25% (2/32nds) THEN WE PRORATE



**STEP 2.** MAKE SURE WHEN DISMOUNTING TIRE(S) NOT TO DAMAGE BEAD WHICH WILL AUTOMATICALLY VOID ANY TYPE OF WARRANTY! PATCHES OR PLUGS WILL ALSO VOID ANY TYPE OF WARRANTY.

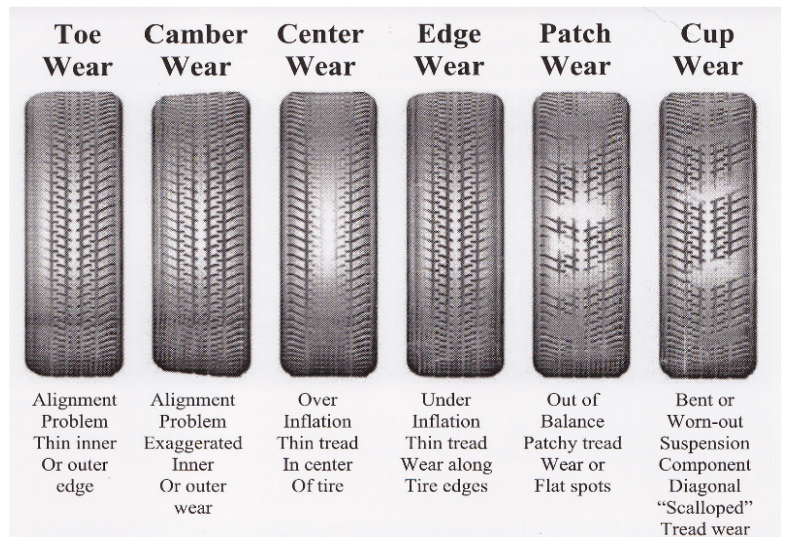


**STEP 3.** ONES TIRE(S) HAS BEEN DISMOUNTED FROM WHEEL PLEASE MAKE SURE TO WRITE SHOP NAME AND RETURN # ON INNER TIRE. THIS WILL HELP US MAKE THE PROCESS MUCH FASTER AND ACCURATE TO WHO TIRE TIRE BELONGS TO.

FOR MILEAGE WARRANTY WE WILL NEED PROOF OF DATE AND MILEAGE OF VEHICLE WHEN TIRES WERE PURCHASED. PROOF OF EVERY TIRE ROTATION DONE TILL DAY OF. IF ANY OF THE BELOW PICTURES APPLY TO YOUR CLAIM, WARRANTY WILL BE VOIDED.



WRITE SHOP NAME AND RETURN #



**WE HAVE A LINK ON OUR WEB PAGE WITH OUR RETURN FORM WHICH YOU CAN FILL OUT AND HAVE READY FOR OUR DRIVER WHEN TIRE(S) ARE READY FOR PICK UP. KEEP IN MIND WITH OUR TERRITORY BEING SO BIG OUR PROCESS AND TIMING IS TAKING LONGER THAN USUAL TO HEAR BACK FROM MANUFACTURERS FOR APPROVAL. SO WE PLEASE ASK THAT YOU HAVE A LITTLE PATIENCE WITH US AS WE ARE TRYING OUR BEST TO GET EVERY WARRANTY TAKEN CARE OF.**